

CAREERS

Newsletter



5/5/2023
Issue 29

For any help, questions or feedback about careers - please email me at Bethany.ward@teesdaleschool.co.uk

Hello

Welcome to your weekly careers newsletter, the purpose of this newsletter is to give you access to relevant careers information, labour market information and useful resources.

I hope you find this issue helpful!

Miss B Ward
Teesdale School, Head of Careers

Dates for your diary

Key
External events
Events in school

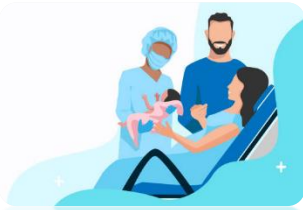
Date	Event
Friday 5 th May	• International day of the Midwife
Monday 8 th May	• BANK HOLIDAY - CORONATION • Future careers lesson week • Choosing the right university for you - 5-6pm - Online Webinar - sign up here: https://aspire.upreach.org.uk/live-webinars/
Thursday 11 th May	• Years 10 & 12 Support Workshops (small groups) • Careers lunch time drop in vibrancy area/careers room

Job of the week

Midwife

<https://www.prospects.ac.uk/job-profiles/midwife>

Midwives provide advice, care and support for women and their babies during pregnancy, labour and the early postnatal period



Qualifications:

- ✓ University - You can do a degree in Midwifery as long as it's approved by the Nursing and Midwifery Council. If you already have a degree that is not in Midwifery, you can do a postgraduate Midwifery course to become a Midwife. You may be able to get additional student financial support through the NHS Learning Support Fund. You'll usually need: 5 GCSEs at grades 9 to 4 (A* to C), or equivalent, including English, maths and science/2 or 3 A levels, including a science, or a level 3 diploma or access to higher education in health, science or nursing a degree in a relevant subject for postgraduate study
- ✓ Apprenticeship - You can do a Midwife degree apprenticeship. This typically takes 48 months to complete and includes learning on the job and studying at an approved university. You'll usually need: 4 or 5 GCSEs at grades 9 to 4 (A* to C) and A levels, or equivalent, for a degree apprenticeship
- ✓ Volunteering - You'll find it helpful to get some paid or volunteering work in healthcare before you apply for a course. You could contact the voluntary services co-ordinator at your local NHS trust for further advice. You can also find volunteering opportunities through The National Council for Voluntary Organisations and Do IT.

Working hours: Working hours typically include unsocial hours. The full-time working week is usually 37.5 hours and is likely to include day and night shifts, weekends and bank holidays.

Salary: Midwives working for the NHS are paid according to a fixed pay scale, known as Agenda for Change. Salaries for newly qualified Midwives are set at Band 5, which starts at £25,655. You can then progress to Band 6, which ranges from £32,306 to £39,027. Salaries at Band 7, where you'll be working at a more senior level, e.g. managing a team, are in the region of £40,057 to £45,839. One of the highest paid positions in nursing is as a nurse consultant where salaries start on Band 8b to 8c, which ranges from £54,764 to £75,874.

Labour Market Information

Top 10 employers to advertise online:



710
job postings



150
job postings



90
job postings



60
job postings



50
job postings



50
job postings



40
job postings



40
job postings



40
job postings



40
job postings

Key Terminology



Internship = the position of a student or trainee who works in an organisation, sometimes without pay, in order to gain work experience or satisfy requirements for a qualification.

Spotlight



University Spotlight – York

<https://features.york.ac.uk/who-we-are/>

The University of York, is a high-performing Russell Group university where enquiring minds, inspiring lecturers and world-class researchers thrive. They provide exceptional learning experiences that stay with their students for the rest of their lives, enabling them to flourish within and beyond their studies.

Since their foundation in 1963, York's focus on academic excellence has resulted in a strong reputation across the globe. In the Times Higher Education World University Rankings 2020 they were ranked in the Top 40 in the world for Arts and Humanities and in the top 100 for Social Sciences. Their founding values of excellence, equality and opportunity for all, anchored by the highest academic standards, are as true today as they were when the University of York opened its doors. They started out with just over 230 students and are now home to more than 18,000 students from over 150 countries.

Next Step Knowledge

Student Finance

<https://london.northumbria.ac.uk/blog/what-is-student-finance-england/>

Student Finance England (SFE) is a service provided by the Student Loans Company. They provide financial support on behalf of the UK Government to students entering higher education in the UK. Student Finance England offer funding for both undergraduate and postgraduate courses.

The financial support potentially being, a tuition fee loan and maintenance loan. These loans apply to students who are studying or going to study on an undergraduate course. A tuition fee loan is paid directly to the University to help pay your tuition fees. A maintenance loan helps towards your living costs, such as food, rent and books. The amount you can borrow depends on your household income, your course and where you live and study.

For more information on applying for student finance, follow the link:

<https://www.gov.uk/get-undergraduate-student-loan>

Careers resources

- www.thecompleteuniversityguide.co.uk/league-tables – University league tables.
- www.thescholarshipuk.org.uk – Search for University scholarships, grants and bursaries.
- www.opendays.com – Details of university open days.
- www.whatuni.com – A good site for comparing University courses and ordering prospectuses.



North East
Learning Trust